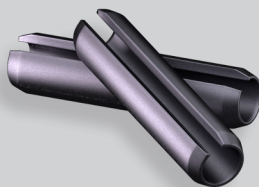
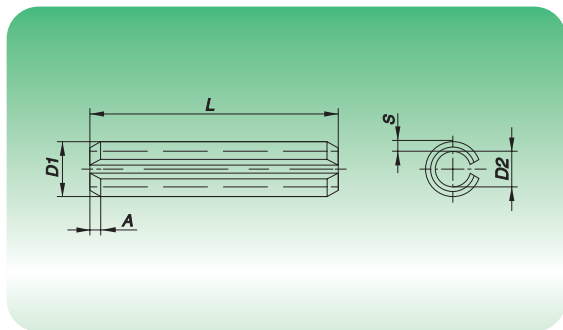


SCHWERSPANNSTIFTE ISO 8752 / DIN 1481

DOWEL PINS ISO 8752 / DIN 1481





krumm&andré





SCHWERSPANNSTIFTE ISO 8752 BRÜNIERT

DOWEL PINS ISO 8752 SELF FINISH

Artikel-Nr.	Ø Schaft (mm)	Länge	
Article No.	Ø Shaft (mm)	Length	
46004015	1,5	4	200
46005015	1,5	5	200
46006015	1,5	6	1.000
46008015	1,5	8	1.000
46010015	1,5	10	1.000
46012015	1,5	12	1.000
46014015	1,5	14	200
46016015	1,5	16	200
46018015	1,5	18	200
46020015	1,5	20	200
46022015	1,5	22	1.000
46024015	1,5	24	1.000
4600402	2,0	4	200
4600502	2,0	5	1.000
4600602	2,0	6	1.000
4600702	2,0	7	1.000
4600802	2,0	8	1.000
4601002	2,0	10	1.000
4601102	2,0	11	5.000
4601202	2,0	12	1.000
4601402	2,0	14	1.000
4601602	2,0	16	1.000

SCHWERSPANNSTIFTE ISO 8752 BRÜNIERT

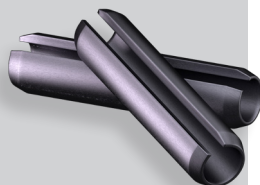
DOWEL PINS ISO 8752 SELF FINISH

Artikel-Nr.	Ø Schaft (mm)	Länge	
Article No.	Ø Shaft (mm)	Length	
4601802	2	18	200
4602002	2	20	1.000
4602202	2	22	200
4602402	2	24	1.000
4602502	2	25	1.000
4602602	2	26	1.000
4602802	2	28	200
4603002	2	30	1.000
46004025	2,5	4	200
46005025	2,5	5	200
46006025	2,5	6	200
46008025	2,5	8	200
46010025	2,5	10	1.000
46012025	2,5	12	1.000
46014025	2,5	14	200
46016025	2,5	16	1.000
46018025	2,5	18	200
46020025	2,5	20	1.000
46022025	2,5	22	200
46024025	2,5	24	200
46025025	2,5	25	1.000
46026025	2,5	26	200

SCHWERSPANNSTIFTE

ISO 8752 / DIN 1481



DOWEL PINS ISO 8752 / DIN 1481



krumm&andré



SCHWERSPANNSTIFTE ISO 8752 BRÜNIERT

DOWEL PINS ISO 8752 SELF FINISH

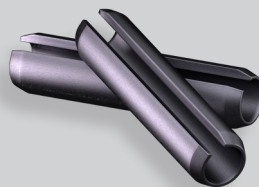
Artikel-Nr.	Ø Schaft (mm)	Länge	
Article No.	Ø Shaft (mm)	Length	
46028025	2,5	28	200
46030025	2,5	30	200
46032025	2,5	32	1.000
46034025	2,5	34	1.000
46035025	2,5	35	1.000
46036025	2,5	36	1.000
46040025	2,5	40	1.000
4600403	3,0	4	200
4600503	3,0	5	1.000
4600603	3,0	6	200
4600803	3,0	8	1.000
4601003	3,0	10	1.000
4601203	3,0	12	1.000
4601403	3,0	14	1.000
4601503	3,0	15	1.000
4601603	3,0	16	1.000
4601803	3,0	18	1.000
4602003	3,0	20	1.000
4602203	3,0	22	200
4602403	3,0	24	1.000
4602503	3,0	25	1.000
4602603	3,0	26	1.000
4602803	3,0	28	1.000
4603003	3,0	30	1.000
4603203	3,0	32	1.000
4603403	3,0	34	1.000
4603503	3,0	35	1.000
4603603	3,0	36	100
4604003	3,0	40	1.000
4605003	3,0	50	100
46006035	3,5	6	200
46008035	3,5	8	200

SCHWERSPANNSTIFTE ISO 8752 BRÜNIERT

DOWEL PINS ISO 8752 SELF FINISH

Artikel-Nr.	Ø Schaft (mm)	Länge	
Article No.	Ø Shaft (mm)	Length	
46010035	3,5	10	200
46012035	3,5	12	200
46014035	3,5	14	200
46015035	3,5	15	1.000
46016035	3,5	16	200
46018035	3,5	18	200
46020035	3,5	20	200
46022035	3,5	22	200
46024035	3,5	24	200
46025035	3,5	25	1.000
46026035	3,5	26	200
46028035	3,5	28	200
46030035	3,5	30	200
46032035	3,5	32	100
46034035	3,5	34	1.000
46036035	3,5	36	100
46040035	3,5	40	100
46050035	3,5	50	1.000
4600504	4,0	5	200
4600604	4,0	6	500
4600804	4,0	8	500
4601004	4,0	10	500
4601204	4,0	12	500
4601404	4,0	14	500
4601504	4,0	15	500
4601604	4,0	16	500
4601804	4,0	18	500
4602004	4,0	20	500
4602204	4,0	22	500
4602404	4,0	24	500
4602504	4,0	25	500
4602604	4,0	26	500

SCHWERSPANNSTIFTE ISO 8752 / DIN 1481





krumm&andré

DOWEL PINS ISO 8752 / DIN 1481



SCHWERSPANNSTIFTE ISO 8752 BRÜNIERT

DOWEL PINS ISO 8752 SELF FINISH

Artikel-Nr.	Ø Schaft (mm)	Länge	
Article No.	Ø Shaft (mm)	Length	
4602804	4,0	28	500
4603004	4,0	30	500
4603204	4,0	32	500
4603404	4,0	34	500
4603504	4,0	35	500
4603604	4,0	36	500
4603804	4,0	38	500
4604004	4,0	40	500
4604204	4,0	42	500
4604504	4,0	45	100
4605004	4,0	50	500
4606004	4,0	60	100
4600805	5,0	8	500
4601005	5,0	10	100
4601205	5,0	12	100
4601405	5,0	14	100
4601505	5,0	15	500
4601605	5,0	16	500
4601805	5,0	18	100
4602005	5,0	20	500
4602205	5,0	22	100
4602405	5,0	24	500
4602505	5,0	25	500
4602605	5,0	26	500
4602805	5,0	28	500
4603005	5,0	30	500
4603205	5,0	32	500
4603405	5,0	34	500
4603505	5,0	35	500
4603605	5,0	36	500
4603805	5,0	38	500
4604005	5,0	40	500

SCHWERSPANNSTIFTE ISO 8752 BRÜNIERT

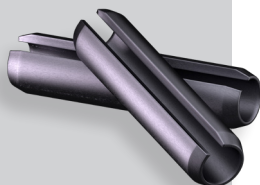
DOWEL PINS ISO 8752 SELF FINISH

Artikel-Nr.	Ø Schaft (mm)	Länge	
Article No.	Ø Shaft (mm)	Length	
4604505	5,0	45	500
4604605	5,0	46	500
4605005	5,0	50	250
4605505	5,0	55	100
4606005	5,0	60	250
4606505	5,0	65	100
4607005	5,0	70	250
4607505	5,0	75	100
4608005	5,0	80	100
4601006	6,0	10	100
4601206	6,0	12	100
4601406	6,0	14	500
4601506	6,0	15	500
4601606	6,0	16	500
4601806	6,0	18	100
4602006	6,0	20	500
4602206	6,0	22	500
4602406	6,0	24	500
4602506	6,0	25	1.000
4602606	6,0	26	100
4602806	6,0	28	100
4603006	6,0	30	500
4603206	6,0	32	500
4603406	6,0	34	500
4603506	6,0	35	600
4603606	6,0	36	500
4604006	6,0	40	500
4604506	6,0	45	100
4605006	6,0	50	250
4605506	6,0	55	100
4606006	6,0	60	250
4606506	6,0	65	100

SCHWERSPANNSTIFTE

ISO 8752 / DIN 1481



DOWEL PINS ISO 8752 / DIN 1481



krumm&andré



SCHWERSPANNSTIFTE ISO 8752 BRÜNIERT

DOWEL PINS ISO 8752 SELF FINISH

Artikel-Nr.	Ø Schaft (mm)	Länge	
Article No.	Ø Shaft (mm)	Length	
4607006	6,0	70	100
4607506	6,0	75	100
4608006	6,0	80	250
4608506	6,0	85	100
4609006	6,0	90	50
4609506	6,0	95	50
4610006	6,0	100	50
4601008	8,0	10	100
4601208	8,0	12	100
4601408	8,0	14	100
4601608	8,0	16	100
4601808	8,0	18	100
4602008	8,0	20	500
4602208	8,0	22	100
4602408	8,0	24	500
4602508	8,0	25	500
4602608	8,0	26	100
4602808	8,0	28	100
4603008	8,0	30	250
4603208	8,0	32	250
4603408	8,0	34	500
4603508	8,0	35	300
4603608	8,0	36	250
4604008	8,0	40	500
4604508	8,0	45	500
4605008	8,0	50	250
4605508	8,0	55	100
4606008	8,0	60	250
4606508	8,0	65	50
4607008	8,0	70	50
4607508	8,0	75	50

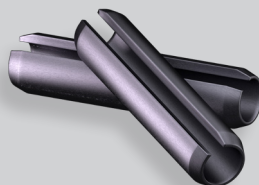
SCHWERSPANNSTIFTE ISO 8752 BRÜNIERT

DOWEL PINS ISO 8752 SELF FINISH

Artikel-Nr.	Ø Schaft (mm)	Länge	
Article No.	Ø Shaft (mm)	Length	
4608008	8,0	80	250
4608508	8,0	85	50
4609008	8,0	90	50
4609508	8,0	95	50
4610008	8,0	100	50
4601210	10	12	100
4601410	10	14	800
4601610	10	16	100
4601810	10	18	500
4602010	10	20	100
4602210	10	22	100
4602410	10	24	100
4602610	10	26	500
4602810	10	28	100
4603010	10	30	100
4603210	10	32	100
4603510	10	35	100
4603610	10	36	250
4603810	10	38	250
4604010	10	40	250
4604210	10	42	1.000
4604510	10	45	250
4605010	10	50	250
4605510	10	55	250
4606010	10	60	200
4606510	10	65	50
4607010	10	70	100
4607510	10	75	50
4608010	10	80	100
4608510	10	85	50
4609010	10	90	50



SCHWERSPANNSTIFTE



ISO 8752 / DIN 1481



krumm&andré

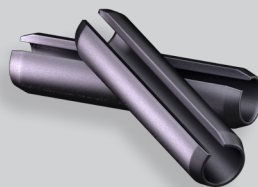
DOWEL PINS ISO 8752 / DIN 1481

SCHWERSPANNSTIFTE ISO 8752 BRÜNIERT			
DOWEL PINS ISO 8752 SELF FINISH			
Artikel-Nr.	Ø Schaft (mm)	Länge	
Article No.	Ø Shaft (mm)	Length	
4609510	10	95	50
4610010	10	100	50
4612010	10	120	25
4601412	12	14	25
4601612	12	16	25
4601812	12	18	25
4602012	12	20	25
4602212	12	22	25
4602412	12	24	25
4602512	12	25	1000
4602612	12	26	25
4602812	12	28	25
4603012	12	30	25
4603212	12	32	25
4603612	12	36	25
4604012	12	40	25
4604512	12	45	25
4604812	12	48	150
4605012	12	50	25
4605512	12	55	25
4606012	12	60	25
4606512	12	65	25
4607012	12	70	25
4607512	12	75	25
4608012	12	80	25
4608512	12	85	25
4609012	12	90	25
4609512	12	95	25
4610012	12	100	25
4611012	12	110	50
4612012	12	120	10

SCHWERSPANNSTIFTE ISO 8752 BRÜNIERT			
DOWEL PINS ISO 8752 SELF FINISH			
Artikel-Nr.	Ø Schaft (mm)	Länge	
Article No.	Ø Shaft (mm)	Length	
4614012	12	140	10
4601013	13	10	25
4601213	13	12	25
4601413	13	14	25
4601613	13	16	25
4601813	13	18	25
4602013	13	20	25
4602213	13	22	25
4602613	13	26	25
4602813	13	28	25
4603013	13	30	25
4603213	13	32	25
4603613	13	36	25
4604013	13	40	25
4604513	13	45	25
4605013	13	50	25
4605513	13	55	25
4606013	13	60	25
4606513	13	65	25
4607013	13	70	25
4607513	13	75	25
4608013	13	80	25
4608513	13	85	25
4609013	13	90	25
4609513	13	95	25
4610013	13	100	10
4612013	13	120	10
4601614	14	16	25
4601814	14	18	25
4602014	14	20	25
4602214	14	22	25

SCHWERSPANNSTIFTE ISO 8752 / DIN 1481



DOWEL PINS ISO 8752 / DIN 1481



krumm&andré



SCHWERSPANNSTIFTE ISO 8752 BRÜNIERT

DOWEL PINS ISO 8752 SELF FINISH

Artikel-Nr.	Ø Schaft (mm)	Länge	
Article No.	Ø Shaft (mm)	Length	
4602414	14	24	25
4602614	14	26	25
4602814	14	28	25
4603014	14	30	25
4603614	14	36	25
4604014	14	40	25
4604514	14	45	25
4605014	14	50	25
4605514	14	55	25
4606014	14	60	25
4606514	14	65	50
4607014	14	70	25
4607514	14	75	25
4608014	14	80	25
4608514	14	85	25
4609014	14	90	25
4609514	14	95	10
4610014	14	100	10
4611014	14	110	100
4612014	14	120	10
4601816	16	18	25
4602016	16	20	25
4602216	16	22	25
4602416	16	24	25
4602616	16	26	25
4602816	16	28	25
4603016	16	30	25
4603216	16	32	25
4603516	16	35	100
4603616	16	36	25
4604016	16	40	25

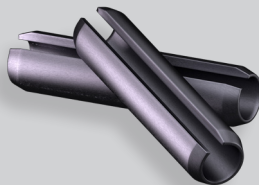
SCHWERSPANNSTIFTE ISO 8752 BRÜNIERT

DOWEL PINS ISO 8752 SELF FINISH

Artikel-Nr.	Ø Schaft (mm)	Länge	
Article No.	Ø Shaft (mm)	Length	
4604516	16	45	25
4605016	16	50	25
4605516	16	55	25
4606016	16	60	25
4606516	16	65	25
4607016	16	70	25
4607516	16	75	25
4608016	16	80	25
4608516	16	85	25
4609016	16	90	25
4609516	16	95	10
4610016	16	100	10
4611016	16	110	10
4612016	16	120	10
4616016	16	160	10
4602418	18	24	25
4602618	18	26	25
4603018	18	30	0
4604018	18	40	25
4605018	18	50	25
4606018	18	60	25
4607018	18	70	25
4608018	18	80	25
4609018	18	90	10
4609518	18	95	0
4610018	18	100	10
4611018	18	110	10
4612018	18	120	10
4613018	18	130	10
4602020	20	20	25
4603620	20	36	250

SCHWERSPANNSTIFTE ISO 8752 / DIN 1481



DOWEL PINS ISO 8752 / DIN 1481



krumm&andré

SCHWERSPANNSTIFTE ISO 8752 BRÜNIERT

DOWEL PINS ISO 8752 SELF FINISH

Artikel-Nr.	Ø Schaft (mm)	Länge	
Article No.	Ø Shaft (mm)	Length	
4604020	20	40	25
4605020	20	50	25
4606020	20	60	25
4607020	20	70	25
4608020	20	80	25
4609020	20	90	10
4610020	20	100	100
4611020	20	110	100
4612020	20	120	100
4615020	20	150	100

Für geschlitzte Spannstiften (-hülen) mit einem Nennedurchmesser $d_1 \geq 10$ mm ist, nach Wahl des Lieferanten, auch nur eine Fase zulässig.

Bis zu einer Vickershärte von 440 HV bis 560 HV gehärtet und ausgelassen

For slotted dowel pins (sleeves) with a nominal diameter $d_1 \geq 10$ mm, depending on the choice of the supplier, only one chamfer is permissible.

Hardened to a Vickers hardness of 440 HV to 560 HV hardened and chamfered

